



KNIGHTSBRIDGE
STRATFORD

PHASE I

LUXURY SINGLES

\$999,800.00

**THE
OTHELLO**

LOT 54

1,936 SQ.FT.
(INC. 86 SQ.FT. OPEN SPACE)

3 BEDS

2.5 BATHS



**RIDGEVIEW
HOMES**
DESIGN. BUILD. ACHIEVE.

**UPGRADED
FEATURES
AND FINISHES**

- Basement window sizes
- 9 ft foundation to basement
- 8 ft high interior doors to main floor
- Additional potlights to front elevation
- Railing to second floor hallway
- Niche to master ensuite

Prices, plans, elevations, grading, information, dimensions & specifications are subject to change without notice. Drawings may also be subject to change based on city bylaws and zoning requirements. Drawings are artist & designer's concept only and are subject to change as per offer, final selections and any adjustment required by OBC & City building/zoning departments. Square Footage may vary without notice. Actual usable floor space may vary from the stated floor area. Square Footage area includes open space and is subject to change without notice. Some features shown may be optional and available at an extra cost. E. & O.E. 2023 Ridgeview Homes. All rights reserved. 21 APR 2023.



PHASE I
LUXURY SINGLES

THE
OTHELLO
LOT 54

1,936 SQ.FT.
(INC. 86 SQ.FT. OPEN SPACE)

3 BEDS
2.5 BATHS

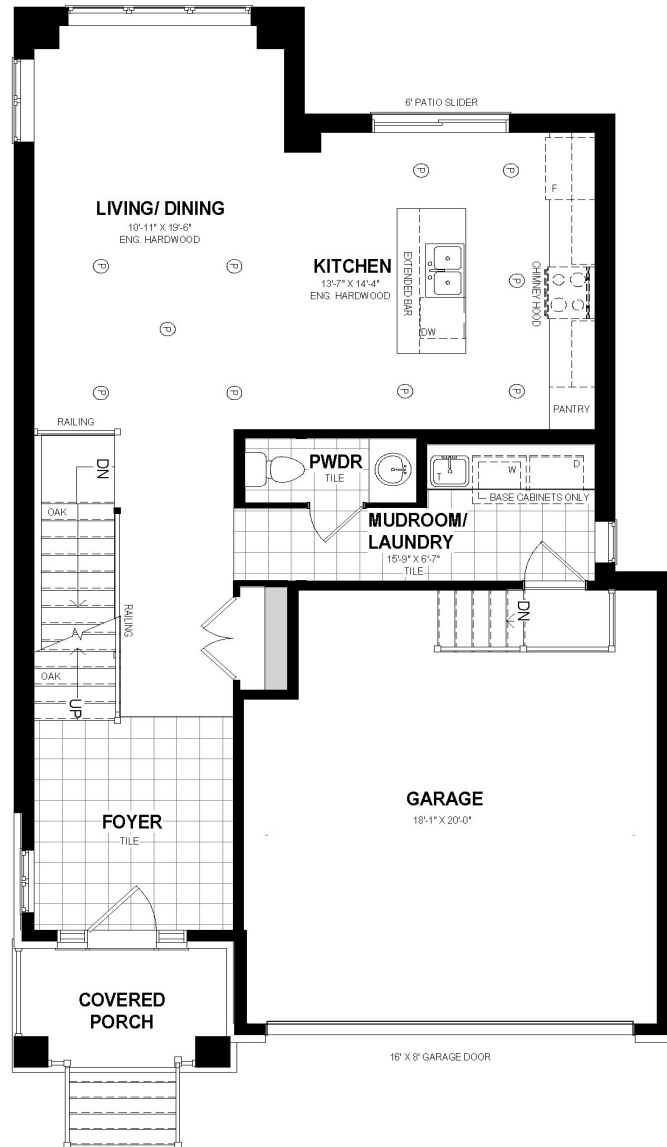


**RIDGEVIEW
HOMES**

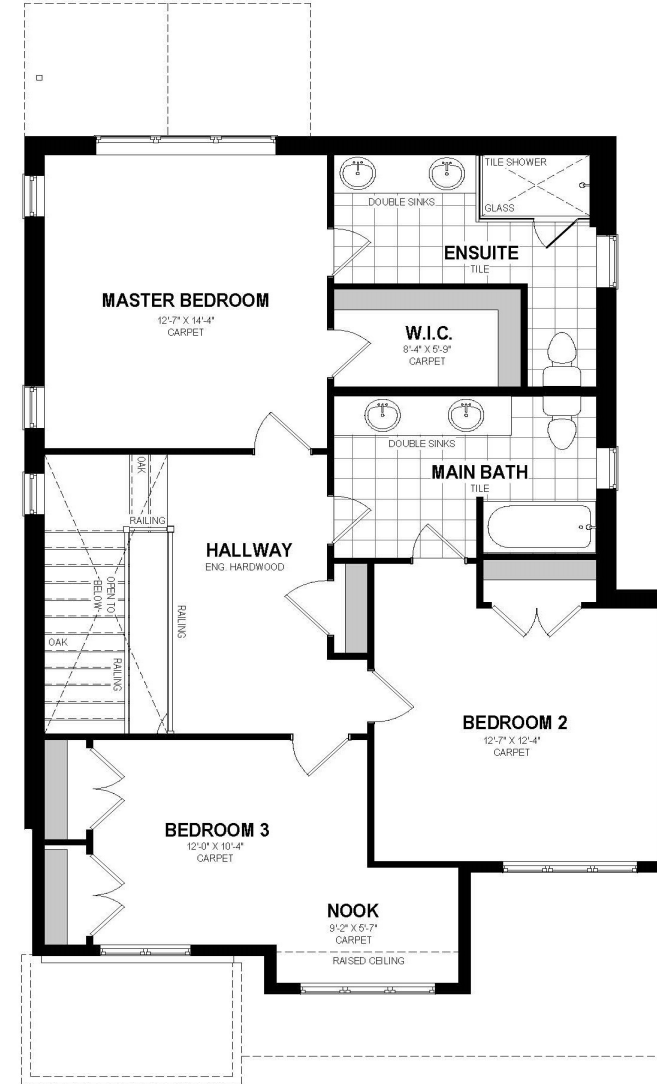
DESIGN. BUILD. ACHIEVE.

SALES CENTRE
519-885-8000

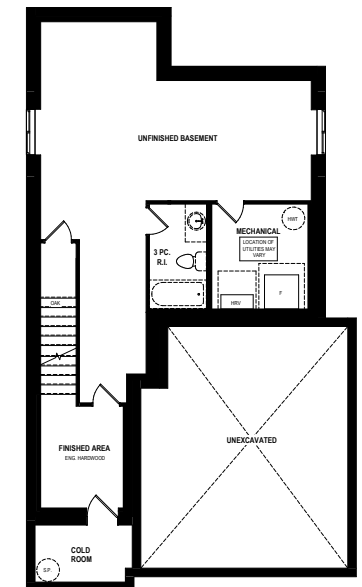
INFO@VONGREALTYGROUP.COM



MAIN FLOOR



SECOND FLOOR



BASEMENT

Prices, plans, elevations, grading, information, dimensions & specifications are subject to change without notice. Drawings may also be subject to change based on city bylaws and zoning requirements. Drawings are artist & designer's concept only and are subject to change as per offer, final selections and any adjustment required by OBC & City building/zoning departments. Square Footage may vary without notice. Actual usable floor space may vary from the stated floor area. Square Footage area includes open space and is subject to change without notice. Some features shown may be optional and available at an extra cost. E. & O.E. 2023 Ridgeview Homes. All rights reserved. 21 APR 2023.