



**KNIGHTSBRIDGE**  
STRATFORD

PHASE I

LUXURY SINGLES

**\$1,162,800.00**

**THE  
LIONEL  
LOT 30**

**2,591 SQ.FT.**  
(INC. 90 SQ.FT. OPEN SPACE)

**4 BEDS  
3.5 BATHS**



**RIDGEVIEW  
HOMES**  
DESIGN. BUILD. ACHIEVE.

**UPGRADED  
FEATURES  
AND FINISHES**

- Black exterior window frames
- Engineered hardwood to main floor
- Quartz countertops to kitchen and all bathrooms
- Backsplash to kitchen
- Floor tiles as per plan

- Oak interior stairs
- Chimney hood fan to kitchen
- Floating shelves to bar area
- Gas fireplace to living room
- Lighting to home (selected areas)

- Interior door hardware
- Lavatory faucets to all bathrooms
- Double sinks to primary ensuite
- Double sinks to main bath

Prices, plans, elevations, grading, information, dimensions & specifications are subject to change without notice. Drawings may also be subject to change based on city bylaws and zoning requirements. Drawings are artist & designer's concept only and are subject to change as per offer, final selections and any adjustment required by OBC & City building/zoning departments. Square Footage may vary without notice. Actual usable floor space may vary from the stated floor area. Square Footage area includes open space and is subject to change without notice. Some features shown may be optional and available at an extra cost. E. & O.E. 2023 Ridgeview Homes. All rights reserved. 20 APR 2023.





PHASE I  
LUXURY SINGLES

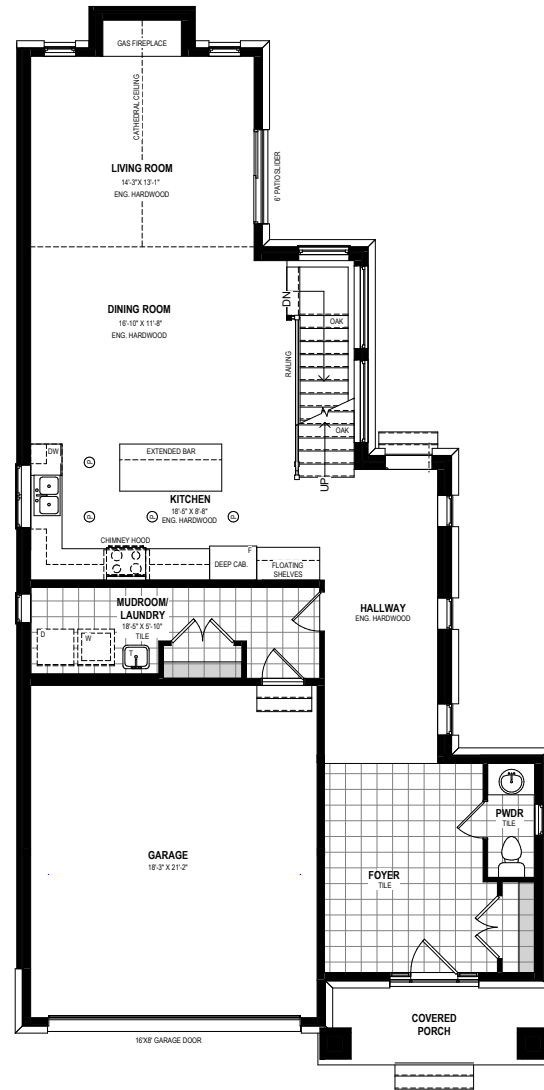
THE  
LIONEL  
LOT 30

2,591 SQ.FT.  
(INC. 90 SQ.FT. OPEN SPACE)

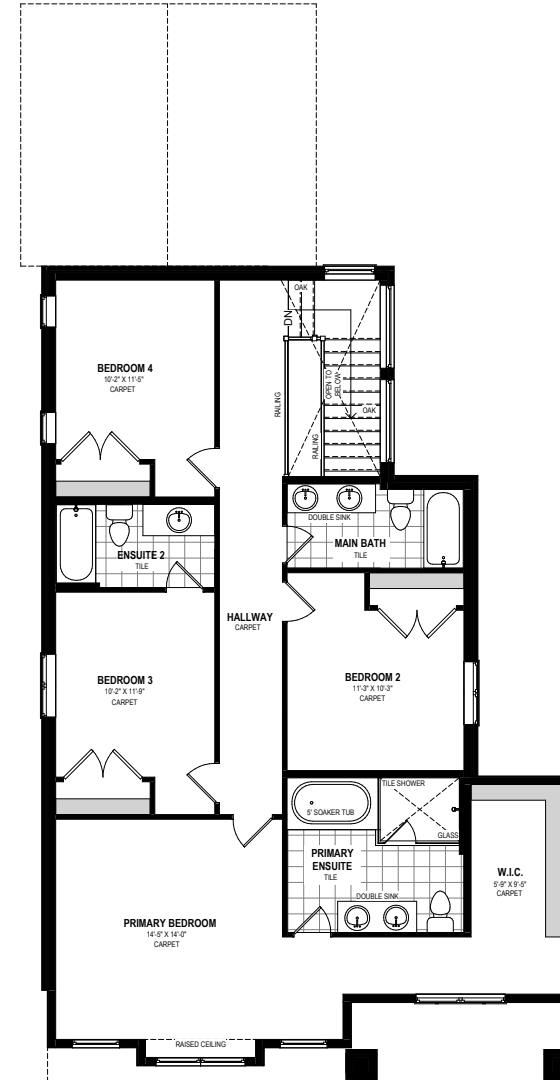
4 BEDS  
3.5 BATHS



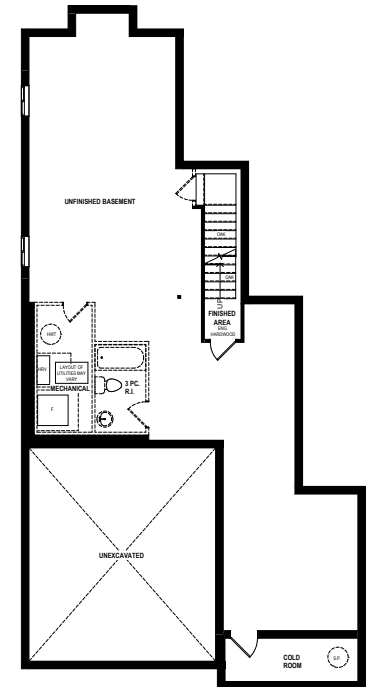
SALES CENTRE  
519-885-8000  
INFO@VONGREALTYGROUP.COM



MAIN FLOOR



SECOND FLOOR



BASEMENT

Prices, plans, elevations, grading, information, dimensions & specifications are subject to change without notice. Drawings may also be subject to change based on city bylaws and zoning requirements. Drawings are artist & designer's concept only and are subject to change as per offer, final selections and any adjustment required by OBC & City building/zoning departments. Square Footage may vary without notice. Actual usable floor space may vary from the stated floor area. Square Footage area includes open space and is subject to change without notice. Some features shown may be optional and available at an extra cost. E. & O.E. 2023 Ridgeview Homes. All rights reserved. 20 APR 2023.