



KNIGHTSBRIDGE
STRATFORD

PHASE I

LUXURY SINGLES

\$1,185,800.00

**THE
BENVOLIO
LOT 51**

2,664 SQ.FT.
(INC. 112 SQ.FT. OPEN SPACE)

**3 BEDS + LOFT
3.5 BATHS**



**RIDGEVIEW
HOMES**
DESIGN. BUILD. ACHIEVE.

**UPGRADED
FEATURES
AND FINISHES**

- Black exterior window frames (as per plan)
- Basement window sizes
- 8 ft patio door in dining room
- 9 ft foundation to basement
- Glass shower to ensuite #2
- Additional windows to living room
- Lighting package to home
- Engineered hardwood to main floor
- Quartz countertops to kitchen and all bathrooms
- Decorative hood fan to kitchen

Prices, plans, elevations, grading, information, dimensions & specifications are subject to change without notice. Drawings may also be subject to change based on city bylaws and zoning requirements. Drawings are artist & designer's concept only and are subject to change as per offer, final selections and any adjustment required by OBC & City building/zoning departments. Square Footage may vary without notice. Actual usable floor space may vary from the stated floor area. Square Footage area includes open space and is subject to change without notice. Some features shown may be optional and available at an extra cost. E. & O.E. 2023 Ridgeview Homes. All rights reserved. 20 APR 2023.



PHASE I
LUXURY SINGLES

THE
BENVOLIO
LOT 51

2,664 SQ.FT.
(INC. 112 SQ.FT. OPEN SPACE)

3 BEDS + LOFT
3.5 BATHS

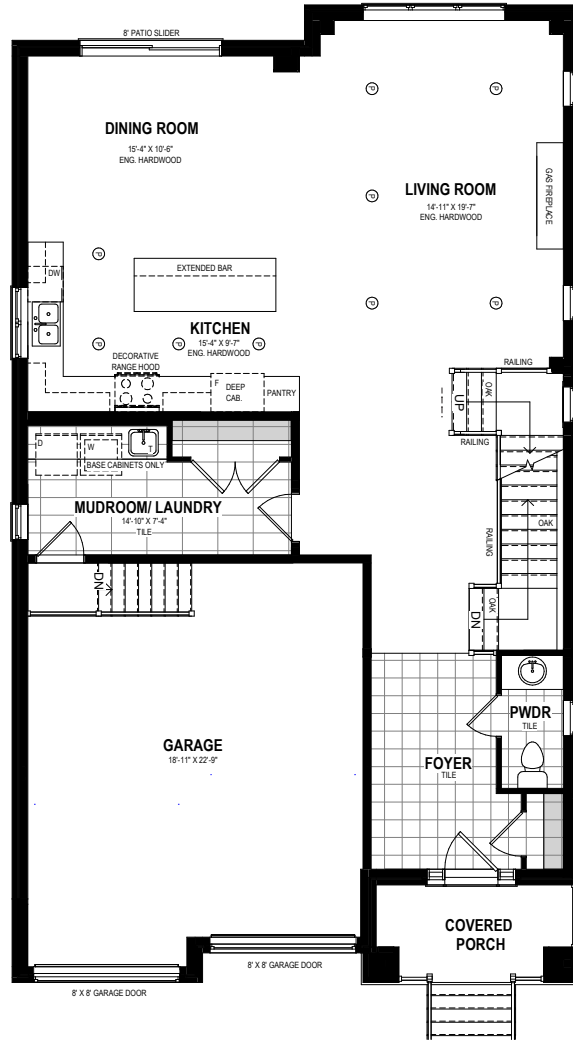


RIDGEVIEW
HOMES

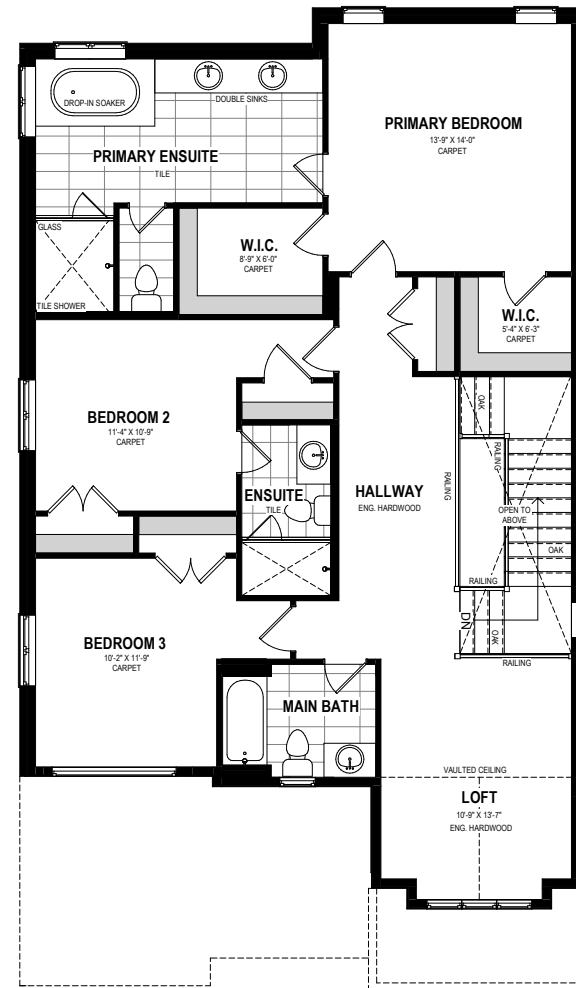
DESIGN. BUILD. ACHIEVE.

SALES CENTRE
519-885-8000

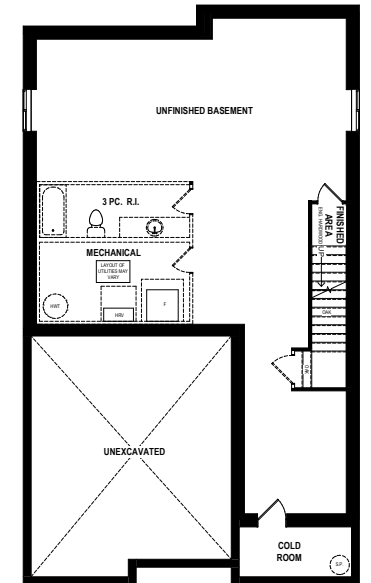
INFO@VONGREALTYGROUP.COM



MAIN FLOOR



SECOND FLOOR



BASEMENT

Prices, plans, elevations, grading, information, dimensions & specifications are subject to change without notice. Drawings may also be subject to change based on city bylaws and zoning requirements. Drawings are artist & designer's concept only and are subject to change as per offer, final selections and any adjustment required by OBC & City building/zoning departments. Square Footage may vary without notice. Actual usable floor space may vary from the stated floor area. Square Footage area includes open space and is subject to change without notice. Some features shown may be optional and available at an extra cost. E. & O.E. 2023 Ridgeview Homes. All rights reserved. 20 APR 2023.