



**KNIGHTSBRIDGE**  
STRATFORD

PHASE I  
LUXURY SINGLES

**THE  
HAMLET**

**1,783 SQ.FT.**  
(INC. 64 SQ.FT. OPEN SPACE)

**4 BEDS  
2.5 BATHS**



**RIDGEVIEW  
HOMES**  
DESIGN. BUILD. ACHIEVE.

Prices, plans, elevations, grading, information, dimensions & specifications are subject to change without notice. Drawings may also be subject to change based on city bylaws and zoning requirements. Drawings are artist & designer's concept only and are subject to change as per offer, final selections and any adjustment required by OBC & City building/zoning departments. Square Footage may vary without notice. Actual usable floor space may vary from the stated floor area. Square Footage area includes open space and is subject to change without notice. Some features shown may be optional and available at an extra cost. E. & O.E. 2024 Ridgeview Homes. All rights reserved. 30 SEP 2024.



PHASE I  
LUXURY SINGLES

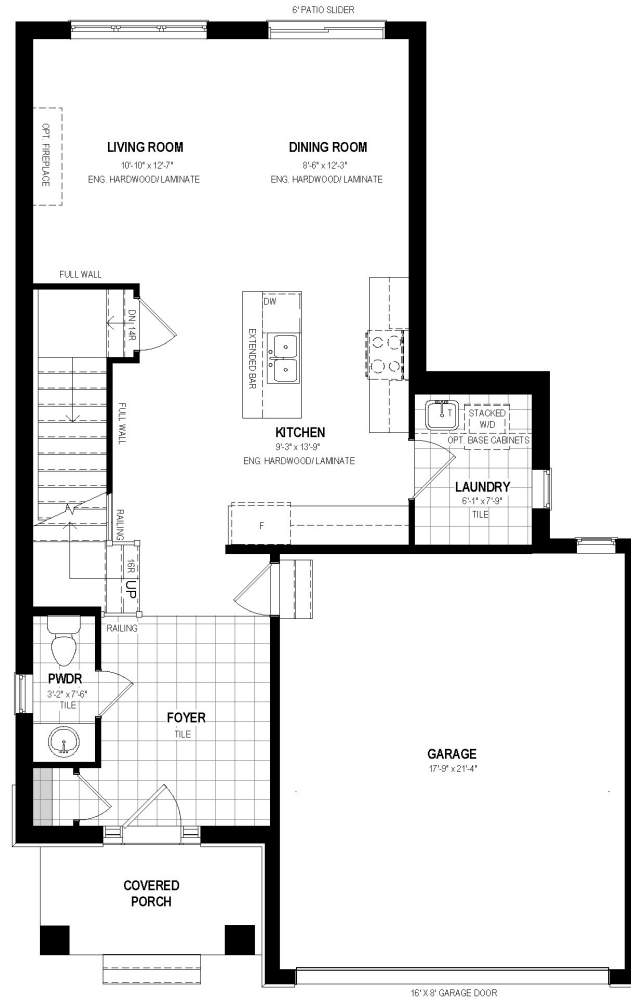
**THE  
HAMLET**

1,783 SQ.FT.  
(INC. 64 SQ.FT. OPEN SPACE)

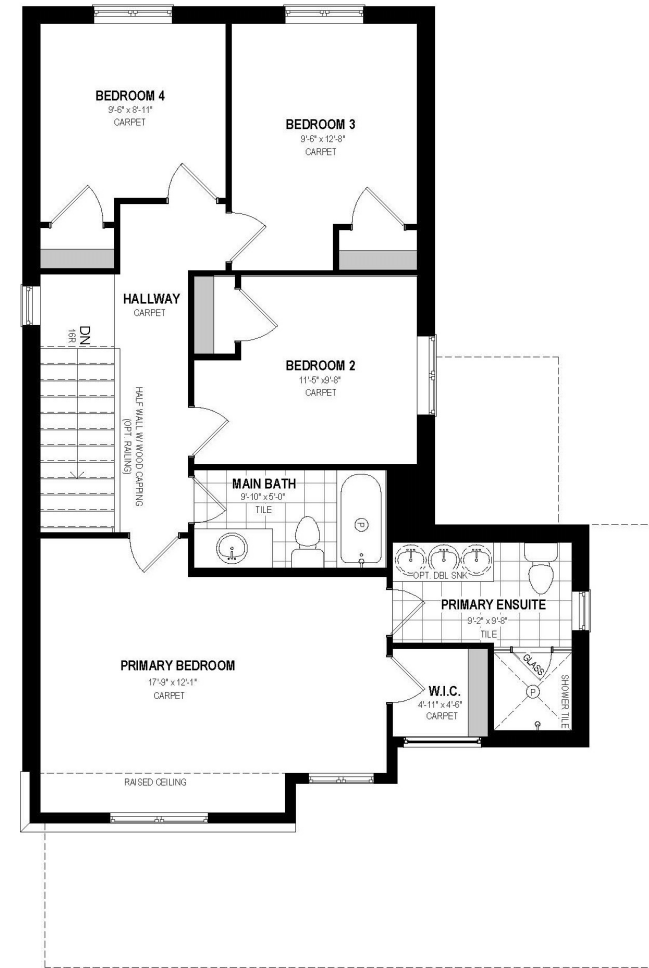
4 BEDS  
2.5 BATHS



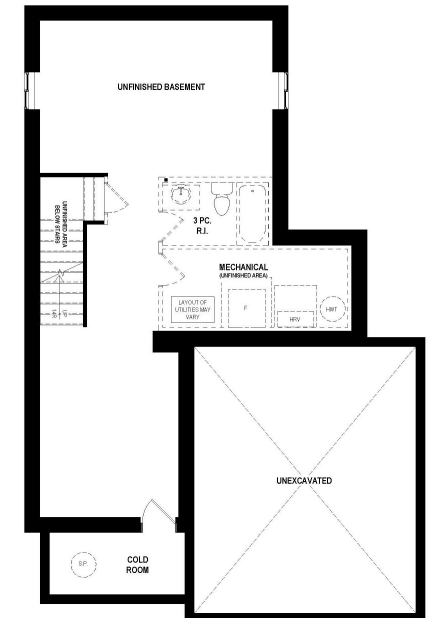
SALES CENTRE 519-885-8000



MAIN FLOOR



SECOND FLOOR



BASEMENT

Prices, plans, elevations, grading, information, dimensions & specifications are subject to change without notice. Drawings may also be subject to change based on city bylaws and zoning requirements. Drawings are artist & designer's concept only and are subject to change as per offer, final selections and any adjustment required by OBC & City building/zoning departments. Square Footage may vary without notice. Actual usable floor space may vary from the stated floor area. Square Footage area includes open space and is subject to change without notice. Some features shown may be optional and available at an extra cost. E. & O.E. 2024 Ridgeview Homes. All rights reserved. 30 SEP 2024.